

Best of KC's Best

THE GOBLINS ARE
COMING

AND BEWARE OF THE GHOSTS

THE 2ND ANNUAL SPOOKY TRICK OR TRADE BREWERIANA SHOW

OCTOBER 25TH

Okay, after last year's inaugural event was deemed a success, the chapter decided to do it again.

While many shows have been celebrating 50 or more years, the Halloween show is geared towards making various brewery related collectible items available to collectors as well as making KC more aware of our hobby.

There is a collection tour planned on Friday at Steve and Julie Polak's home (I have seen it; it is definitely worth your while).

The show gets underway Saturday morning with the setup starting at 7 am. It will then open to the public at 9 am. Also, there will be on-site food available

After the show, there will be a collection tour at the home of Bruce Gregg.

A flyer with additional information on the show is included in this newsletter.

BCCA
BREWERY COLLECTIBLES
CLUB of AMERICA®



Chapter #22
of the BCCA

NEXT FIRST WEDNESDAY
AT BOULEVARD IS
OCTOBER 1ST

Our monthly Chapter get together commences at 1:00 pm in the Tours and Rec Center. Your first beer is compliments of Boulevard.

Next Newsletter Deadline

The deadline for articles and/or show flyers for the next newsletter is November 22, 2025.

Any member can submit an article, an idea for an article or pictures of finds made, shows attended, breweries visited or anything else related to our hobby.

If you have ideas for an article but need help composing contact Bob Hoover at kcbestcan@aol.com or 816-797-8180.

KC's Best Chapter



The Best of KC's BEST is the official newsletter of the KC's BEST chapter of the BCCA. It is scheduled for quarterly publication *but once in a while there may only be three annually.*

The KC's BEST chapter was founded in 1974. All or any portion of this newsletter may be used or reproduced by the BCCA or any of its affiliated chapters or anyone else for that matter.

There are currently two scheduled chapter co-sponsored shows a year (Mid-Missouri and Salina). Annual dues are \$5 for electronic newsletters, payable by January. Family member dues are \$4 each. For information, or to mail renewals, write or call Bill Boyles, 13326 Oakbrook Dr, Kearney, MO 64060. 816/415-3834

CHAPTER OFFICERS

PRESIDENT Bruce Gregg #248 Kansas City, MO, 816/763-6476

VICE PRESIDENT Pat Elam #846 Kansas City, MO 816/420-9365

SECRETARY Bob Hoover #21925 Shawnee Mission, KS, 913/498-9726. kcbestcan@aol.com

TREASURER Bill Boyles #1454 Kearney, MO 816/820-9933

CHAPTER BOARD MEMBERS

Marcia Butterbaugh, Kearney, MO

Scott Echols, Independence, MO

Jim Peterson, Shawnee, KS

Steve Polak, Liberty, MO

Matt Sackett, Olathe, KS

Jim Vincent, Wichita, KS

Tom Waggoner, Shawnee Mission, KS



www.bcca.com

747 Merus Court
Fenton, MO 63026

Annual dues are \$45.

WHATS ON TAP

Sept 28 31st Annual Jerry Trowbridge Memorial Show-Topeka – Sponsored by the Carrie Nation Chapter

Oct 5 Twin Lakes Arktoberfest. Mountain Home, AR. Contact Bob Renforth at 623.451.2160 or ren4th57@gmail.com

Oct 11 Guzzle 'n Twirl, Maplewood, MN. Paul Schmidt 651.343.8244

Oct 19 I-80 Beer Collectibles Show. Tony Stice 641.831.9725 or stice@iowatelecom.net

Oct 25, TRICK OR TRADE BREWERIANA SHOW, Kansas City. Cheryl Boyles 816.674.3124

Congratulations to **Boulevard Brewing Company** (Kansas City), **Logboat Brewing Company** (Columbia), and **Piney River Brewing Company** (Bucyrus) for bringing home medals from the 2025 **U.S. Open Beer Championship!** 🏆

With more than 8,000 beers submitted across 170+ categories, competition was fierce — but these Missouri breweries rose to the top:

🥇 Gold – “Boulevard Light” (American Cream Ale) – Boulevard Brewing Co.

🥇 Gold – “Float Trip” (American-Style Wheat Beer) – Piney River Brewing Co.

🥇 Gold – “Plaid Habit” (Barrel-Aged Dark Beer) – Boulevard Brewing Co.

🥈 Silver – “Pale Ale” (ESB) – Boulevard Brewing Co.

🥉 Bronze – “Bobber” (Dortmunder Export) – Logboat Brewing Co.

🥉 Bronze – “Southwest BLVD” (American-Style Fruit Beer – Lime) – Boulevard Brewing Co.

🥉 Bronze – “Space Camper Non-Alcoholic – Zero Gravity IPA” (Non-Alcoholic IPA) – Boulevard Brewing Co.

Way to represent Missouri on the national stage!

Do not forget to promote our web site when you are out and about at craft breweries, antique malls, shows or anywhere else for that matter.

There is no sign in or password needed. Just let them know about the web site and navigation is simple.

What better way to get the word out about our chapter and hobby!

Also, upcoming show flyers can be found there.



Crane Brewing celebrated their 9th anniversary with a Holiday Cake which is an Imperial Sour Ale. Also shown above is Hidden Gem which is a Hazy IPA.

IT'S TIME TO RENEW YOUR CHAPTER MEMBERSHIP

And, its easier than ever. All you have to do is make it to the October Halloween show and you can renew it there. No hassle, no postage stamp, no delay.

NICE DISPLAY



Jerry Porter post to Faceook 6.9.2025

Boulevard Brewing Company

Take me out to the ball game, and then to space! At Kauffman Stadium, head up to the top level to experience the Space Station, a new port for Space Camper. (Near section 420)

KANSAS KOLLOSSAL KAN KAPER 2025



Tom and Jane Waggoner chat with Jim Vincent



Dominic Oswalt looks over Jacob Parkers items



Bruce Gregg is looking for some treasures



Glen Pederson and Matt Sackett are taking it easy



Brian Artzberger checks out Bruce Greggs stuff



MORE S'MORES was a collaboration that **Boulevard Brewing** did with **Whitman's** Candy Co. This barrel-aged stout was packaged in this colorful 16 oz can.

Brewing is more than a brewery — it's a gathering place for locals, travelers, and everyone who enjoys a good pint and great company. Founded by Randy and Suzanne Addington, longtime Kansans and lifelong adventure seekers, our brewery is inspired by the scenic roads we've traveled and the people we've met along the way.

After years of riding Harley Davidson motorcycles across Kansas and beyond, we've learned one thing: the best experiences are found off the beaten path. For Randy, that also includes brewing — a passion he's honed for over 15 years. Together, we're building a place where everyone can slow down, connect, and enjoy a cold one crafted with care. Whether you're a neighbor or just passing through, we invite you to be part of this new chapter with us.

MARTIN CITY BREWING OPENS MARTIN CITY TAVERN AT SOUTH COUNTRY CLUB PLAZA



1601 COMMERCE DR, TONGANOXIE, KS 66086

Nestled in the heart of Tonganoxie, County Road

PATHLIGHT BREWING SHUTS IT DOWN

It is with heavy hearts we announce the closing of Pathlight Brewing. This decision was not made lightly, and we are overwhelmed with a mix of gratitude, pride, and loss as we reflect on the past five years.

Pathlight's mission was about more than just brewing exceptional beer - it was about creating an inclusive space where this craft could spark community connection. New friendships were forged as patrons and staff bonded over everything from barleywine to Formula 1. This was the vision, and Pathlight nailed it.

To our incredible staff: Thank you for bringing your heart and hustle to every shift. This was more than just a brewhouse and taproom. You made Pathlight a home.

To our patrons, collaborators, neighbors, and friends: Your support helped build such a vibrant space, and it could not have been done without you. Thank you for not only walking this path with us, but for lighting the way.

Please join us the weekend of June 20th, our 5th anniversary, as we celebrate our journey and say goodbye the best way we know how - together.

-The Pathlight Brewing Team



Rizoma Liquid Creations changed their name to Rizoma Brewing this past Spring. The ale shown above was a collaboration with Vine Street Brewing from last year and was brewed and canned by Vine Street. As far as we know, Rizoma is still raising money to open their own brewery.



KC BIER Co has canned some of their ales in 19.2 oz cans like the two shown here.



Fancy Livin' from **Boulevard** is distributed in 12 oz cans. It is a *white sangria sour ale*.

CONSTRUCTION BEGINS ON KANSAS CITY BIER COMPANY'S SECOND LOCATION IN LENEXA

Delaney Eyermann WDAF TV

KANSAS CITY, Mo. — Construction has begun on Kansas City Bier Company's second location, which is set to open at 98th and Ridgeview Road in Lenexa, Kansas.

Kansas City Bier Company, located in the Waldo Neighborhood in south Kansas City, opened in 2014 with an indoor taproom and outdoor Biergarten. The brewery has since grown, expanding distribution into the retail market throughout all of Kansas and most of Missouri, producing a variety of German-style beers in kegs, cans, and bottles.

The company said its new location in Lenexa will be one of the largest authentic Bavarian-style Biergartens in the U.S.

The two-acre site will include a large Bierhalle, showcase brewery, event space, covered patio and Biergarten with a children's play area, amphitheater, and an off-leash dog park.

Beer served at the location will be brewed on site. However, the company said all retail market production will still take place at the Waldo location. The food menu will include a mixture of American dishes and German favorites like schnitzel, sausage, rotisserie chicken and popular German "street foods" like Döner Kebab, Leberkäse and pretzels.

KC Bier Co expects the project to open in the late spring of 2026.



The Big Rip Brewing Company, as we all know it, has run its course. We will skip the stuff you probably already know about struggling small businesses in a world riddled by a pandemic and get right to it.

Our head brewer since 2018 and partner since 2020, Bri, is moving to Colorado to be with her son while he grows up. That decision left us weighing a lot of options, having a lot of meetings, and ultimately deciding that the right thing to do is to leave her, and Big Rip's, legacy as it is.

The building will be getting a bit of a facelift and will reopen within a few weeks under new management with a new head brewer. Yes, this location will continue to be a brewery serving up tasty beers, under a new name and concept, with some other fun changes coming along with it. Thank you all for an incredibly wild 12 years in North KC!



Bam-Bam Brewing Company is a small brewery in Desoto. Currently, their ales are only served at the VFW in Desoto. They recently announced they are building a brewery in Ft Scott, KS.

31ST JERRY TROWBRIDGE MEMORIAL BREWERIANA & BEER CAN SHOW-TOPEKA

SPONSORED BY THE CARRIE NATION
CHAPTER OF THE BCCA

CRESTVIEW SHELTER HOUSE
4901 SW SHUNGA DR
TOPEKA, KANSAS
SUNDAY SEPTEMBER 28TH, 2025
9 AM to 2 PM



Don't axe the can

Social Time Early Arrivals

Meet at Marc Milner's Home
4101 SW 35th Terrace
7785/267.2739

Dinner at Blind Tiger Brewery

SATURDAY SEPT 27 4 PM

417 SW 37th
Topeka, KS

*For more information contact Marc Milner at
785/273.8447 or email to WILBUR63@COX.NET*



Cock-a-Doodle Brews began more than 20 years ago with a homebrew kit from a small brew shop in Kansas City. The brewing-bug took hold and, over the years, led to a solid stable of unique recipes, a strong local following, and consistent success at local brew competitions.

In early 2018, the opportunity to put our beer on shelves and taps came about through a childhood friendship with the owner of Weston Brewing Company. Ideas were shared, bonds re-kindled, and Rhode Island Red Rye launched as our first commercial brew in July.

We are based in Lone Jack, Missouri and are working to bring delicious, small batch, local craft beer to residents throughout our home state of Missouri, as well as our neighbors in Kansas. Our brews, brand, and "Farm to Pint" tagline are inspired by our country lifestyle.

KANSAS CITY METRO BREWERIES

Alma Mader Brewing, 2635 Southwest Blvd, KC, MO

Amerisport Brewpub, 8201 NE Birmingham Road Kansas City, MO Located at the Ameristar Casino.

Bam-Bam Brewery, 33725 w 84th st, Desoto, KS

BKS Artisan Ales 633 E 63rd, KC, MO

Black Stag Brewery, 623 Massachusetts, Lawrence, KS

Brew Lab KC, 7925 Marty, Overland Park, KS.
www.brewlabkc.com

Boho Brewery 15425 Old Town Drive, Parkville, MO

Border Brewing Co 406 E 18th St, KC, MO
borderbrewco.com

Boulevard Brewing, 2501 Southwest Boulevard, KC, MO.
blvdbeer.com.

Brewery Imperial, 1829 Oak, KC, MO breweryimperial.com

Broken Hatchet Brewery 422 Main, Belton, MO

Callsign Brewing Co, 1340 Burlington, North Kansas City, MO. Callsignbrewing.com

Casual Animal Brewing Company 1725 McGee, Kansas City, MO casualanimalbrewing.com

City Barrel Brewing, 1740 Holmes, KC, MO

Cinder Block Brewing 110 E. 18th Ave, North Kansas City, MO cinderblockbrewery.com

Crane Brewing Company, 6515 Railroad St, Raytown, MO
cranebrewing.com

Diametric Brewing Co, (formerly New Axiom) 949 NE Columbus, Lees Summit, MO. Newaxiombrewco.com

Discourse Brewing 7211 W 97th, Overland Park, KS

Double Shift Brewing Co 412 E. 18th St, KC, MO
doubleshiftbrewing.com

East Forty Brewing, 1201 W Main St, Blue Springs, MO

Ebert Bros Brewing 400 E 31st, KC, MO (in the Brickhouse)

ExBEERiment Brewery 925 E Lincoln Lane, Gardner, KS

Fields & Ivy Brewery, 706 E 23rd, Lawrence, KS.
www.fieldsandivy.com

Free State Brewery 636 Massachusetts
Lawrence, KS freestatebrewing.com

Friction Beer Co 11018 Johnson Dr, Shawnee, KS

Fringe Beerworks 224 SE Douglas St, Lee's Summit, MO
fringebeerworks.com

Goat Brewing 817 NE Rice Rd, Lees Summit, MO

Gordon Biersch Brewery 11652 Ash St., Leawood, KS.
Gordonbiersch.com

Grains & Taps Brewery, 10 SW 3rd Lees Summit, MO
grainsandtaps.com

Granite City Brewing Co 8461 NW Prairie View Road KC,
MO gcfb.com

Green Room Brewery, 4010 Pennsylvania, Kansas City, MO.
Greenroomkc.com.

Kansas City Bier Company 310 W. 79th, KC, MO kcbier.com

Lake Lotowana Brewing Co. 9420 S. Shrout Rd, Lake Lotawana, MO

Lawrence Beer C0, 826 Pennsylvania, Lawrence, KS.
Lawrencebeerco.com. Also,

Lawrence Beer Co. West
4811 Bob Billings Pkwy, Lawrence, KS

Limitless Brewing, 9765 Widmer, Lenexa, KS
www.limitlessbrewing.com

Martin City Brewing Company 500 E 135th, Kansas City, MO, martincitybrewingcompany.com

Nimble Brewing 1725 Oak St, KC, MO nimblebrewing.com

9 Foot Brewing, 3421B NW Jefferson St, Blue Springs, MO.

Outfield Beer Co 611 W 2nd St, Bonner Springs, KS

Outlaw Brewery 309 E 10th Ave, North Kansas City, MO

Pathlight Brewing 11200 W 75th, Shawnee, KS

POG Brewing 24524 S MO Hwy D (Holmes Road), West Line, MO

Range 23 Brewing 13400 Donahoo Rd, KC, KS

Red Crow Brewing Co, 1062 W Santa Fe, Olathe, KS
redcrowbrew.com

Red Sash Brewing, 406 E 18th St, KC, MO

River Bluff Brewery 201 Main, KC, MO

Rochester Brewing & Roasting 2 129 Washington, KC, MO

Rock Creek Brewery 5880 Beverly Ave, Mission, KS

Sand Hills Brewery, 5612 Johnson Dr, Mission, KS

Servaes Brewing, 10921 Johnson Dr, Shawnee, KS

Stockyards Brewing Co, 1600 Genessee St, KC, MO
stockyardsbrewing.com

Smoke Brewing Co. 209 SE Main, Lee's Summit, MO

Strange Days Brewing 316 Oak, KC, MO.

Tall Trellis Brew Co 25600 W Valley Pkwy, Olathe, KS

23rd Street Brewery 3512 Clinton Parkway Lawrence, KS,
66047. Brew23.com

3 Halves Brewery 110 E Kansas, Liberty, MO

39th Street Brewery 1320 W 39th St, KC, MO

Three Trails Brewery 111 N Main, Independence, MO
3trailsbrewing.com

Torn Label Brewing Company 1708 Campbell St KC, MO.

Transparent Brewery 14501 White Ave, Grandview, MO

Transport Brewery 11113 Johnson Dr, Shawnee, KS
transportbrewery.com

Vine Street Brewing, 2010 Vine St, KC, MO

Welco Brewing 117 S. Commercial St, Smithville, MO

Wolcott Brewing Company, 600 Cherokee St, Leavenworth
Kansas. Wolcottbrewing.com

NEARBY CRAFT BREWERIES

1st Barrel Brewing 510 B Edmond, St Joseph, MO

Angry Swede Brewing 513 Francis, St Joseph, MO

Atlas Saloon Brewery, 100 W Broadway, Excelsior Springs, MO, www.atlassaloon.com

Baldwin City Beer Company 520 S High, Baldwin City, KS

D & G Pub & Grub Brew Haus 1918 Frederick Ave, St Joseph

Iron Kettle Brewing 508 N Main, Grain Valley, MO

Liberty Cap Brewing, 402 N 13th St, St Joseph, MO

River Bluff Brewery, 1224 Frederick Ave, St Joseph, MO www.riverbluffbrew.com

CORNHUSKER CHAPTER HOLDS MEETING AT PAUL & VICKI STORZ HOME. KC BEST CHAPTER INVITED TO JOIN AND TOUR THE STORZ COLLECTION



The Storz Beer blimp landed in the Storz driveway



Scott Echols and Paul Storz stand in front of beautiful Storz signs.



A train car loaded with Storz Winterbru for Kansas City. Wow.



Here are a couple of seldom seen Goetz bottles that are in Paul Storz' bottle collection. The 'pilsener' on the left has very attractive colors and graphics.

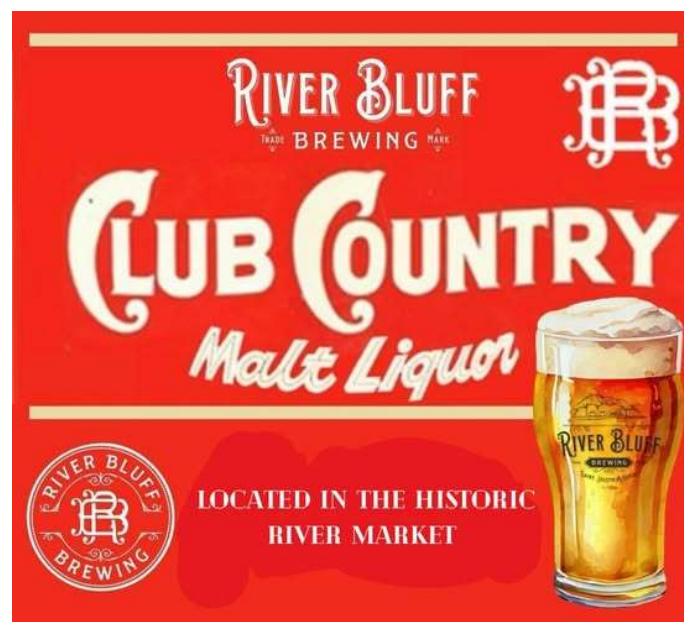


Fields & Ivy Brewery continues to rapidly expand their offering of various styles. Shown above: Cerveza Lager-a salted lime lager; Open Pasture American Wheat and Kaw River Roller – a double IPA.

CHAPTER BREWERY VISIT



The KC Best Chapter held a craft brewery get together on June 28 at the Outfield Brewery in Bonner Springs. We had 19 people that showed up to enjoy this unique brewery.



A nicely designed label from River Bluff Brewery.

Then vs. Now: The "Beer Castle" at 18th and Main



*KC Yesterday
Facebook post*

Swiss immigrant George Muehlebach Sr. founded the Muehlebach Brewing Company after purchasing the Main Street Brewery at 18th and Main Streets in 1869.

Following the death of his brother John, George replaced the original brewery with a grand Romanesque-style brewhouse known locally as the "Beer Castle."

The brewery quickly became one of Kansas City's largest, producing over 100,000 barrels of beer annually by 1911.

After George's death in 1905, his son George E. Muehlebach expanded the family's influence by opening the Hotel Muehlebach and building Muehlebach Field, home to the Kansas City Monarchs and Blues.

Although the brewery survived Prohibition by producing soft drinks and near beer, it closed during the Great Depression and eventually sold to Schlitz Brewing in 1956.

The "Beer Castle" was demolished and eventually became the headquarters of TWA in the mid-1950s, and is currently home to Barkley, a full-service advertising agency.



KC BIER Co has their Kolsch and Lager available in 12 oz. cans.

Crane Brewing closes after 11 years; it's the fourth KC brewer to close in 2025

After 11 years in business, Crane Brewing Co. is the latest Kansas City-area craft brewery to shut down. Crane Brewing at 6515 Railroad St. in Raytown was founded in 2014 after a grassroots effort by Michael Crane, Chris Meyers, Randy Strange and Jason Louk. It was sold in 2023 to a group led by serial entrepreneur Steve Ismert, with Chris Meyers staying on as a silent minority owner.

The brewery carved a niche by focusing mainly on producing sour beers. And it sits along the Rock Island Trail, attracting bikers and walkers.

Crane's lease was set to expire at the end of the year, and the new owners were unable to reach an acceptable agreement with the landlord, who sent a termination letter.

HARD SELTZER VS. BEER—WHICH IS HEALTHIER TO DRINK THIS SUMMER?

Story by Amanda Mactas

Hard seltzer launched into the alcohol space fast and hard, immediately sparking competition for beer brands. Most [hard seltzers](#) boast the same low ABV content as your standard [beer](#), hovering somewhere around 5% alcohol by volume, making them a great alternative for those who don't particularly enjoy beer. But that does beg the question—is it a healthier alternative to beer, too?

According to nutritionist [Amy Brownstein](#), MS, RDN, the answer is no. "No one alcohol is inherently better than another," she explains. The biggest nutritional difference between the two beverages comes down to gluten. Hard seltzers are gluten-free, while beers are not. For anyone with celiac disease or gluten intolerance, this can play a huge role in which beverage is better for you to consume. Some seltzers do contain added vitamins, minerals, or nutrients like vitamin C, but they are unlikely to make much of a difference to your overall health.

Other subtle differences between hard seltzer and beer include the calorie count and sugar content. Brownstein cautions drinkers to be aware of added sugars hidden in hard seltzers. "Added sugars in beverages quickly add up. Dietary guidelines recommend limiting added sugar to less than 10% of your daily calories due to its association with diabetes, heart disease, and other chronic health conditions," she explains.

When it comes to calories, hard seltzers often have an edge, typically containing 90 to 110 calories per 12-ounce can, compared to 150-200 calories in a regular beer. However, this can vary widely depending on the beer—light or low-carb beers have significantly fewer calories than heavier varieties like double IPAs. While both beer and hard seltzer have high water content, since they are alcohol, they are both considered diuretics, which can contribute to dehydration.

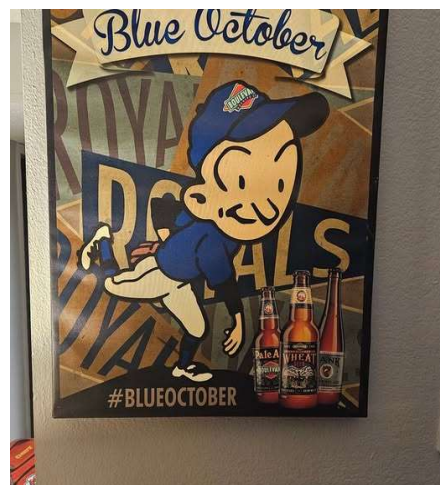
When it comes down to it, neither option is inherently healthier than the other. "If you choose to drink, pick the beverage you prefer," Brownstein

recommends. "Choose which one will be more satisfying, as this may lead to less drinking overall. At the end of the day, it's your overall alcohol intake that matters for health."



Martin City Brewing introduced their Hefeweizen in July. Called Fountain City (a reference to Kansas City's nickname), the label features Union Station with a fountain in front of it.

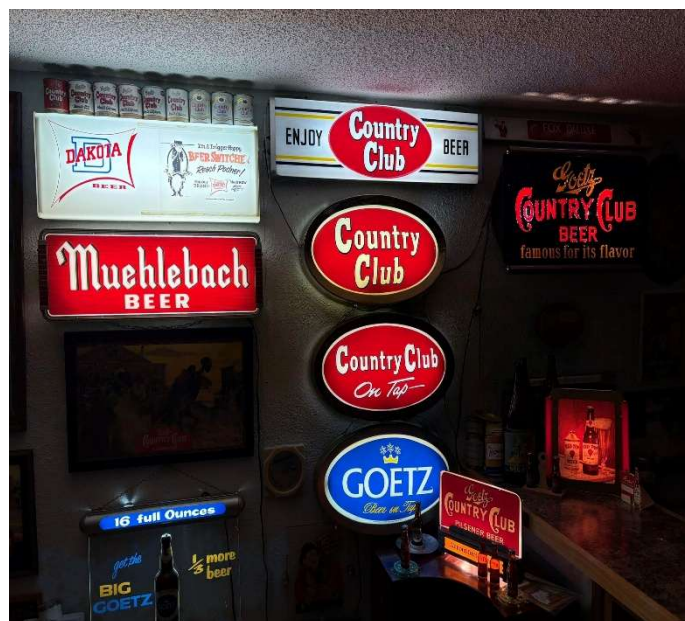
Transparent Brewing Company has canned several of their styles in 16 oz cans. Shown here is Kickstand, a Kolsch style ale. This can, like their others, is very colorful.



Nice Boulevard
poster



The above cans from **Diametric Brewing Company** were canned and distributed in 12 oz cans. From the top, L to R, *Worth the Climb* is a Dry Hopped Lager, *Uncles, Daddies & Baddies* is an English Style Lager, *Four Pillars* is a Maibock Lager and *Mighty MO* is an Oatmeal Stout.



Really nice signs that Jim Vincent shows here. The one that is most intriguing to me is the one on the bottom left that says “Get the Big Goetz”. It references the 16oz Goetz bottle and also states “1/3 more beer”.

VINE STREET BREWING

Jazzman Black Lager

Jazzman was our very first brew—and it's still stealing the show. This black lager hits all the right notes with a deep, dark pour that surprises you with its crisp, clean finish. Roasted malt, toasted nuts, and hints of cola play in harmony, backed by a subtle hop bitterness that never overpowers the vibe.

Don't let the color fool you—this beer is light on the palate and perfect for any occasion, whether you're kicking back with friends or catching a set under the stars.

Bold in appearance. Smooth in delivery. Always in tune.



KC's Best Chapter, 2nd Annual
**SPOOKY TRICK OR TRADE
BREWERIANA Show**
Saturday, October 25, 2025
8am - 2pm

Bishop O'Hara Event Hall
5111 E 112th Terr,
Kansas City MO 64137

- Trick or Trading begins at 8am with setup at 7am.
- Show opens to the public at 9am.
- A howling good raffle.
- Food available on site.

The Chapter is planning collection tours
on Friday afternoon/evening and Saturday
after the show. More details to come.

Name _____

Address _____

City _____ State _____ Zip _____

Email _____ Phone _____

Number of tables (8ft) at \$25 each _____ Total Enclosed \$ _____

Electricity _____ Wall Space _____ (Limited availability / First come first serve.)

Mail check payable to:
KC's Best Chapter
Send to:
Cheryl Boyles
13326 Oakbrook Drive
Kearney, MO 64060

Suggested lodging close to the show:
Hampton Inn Belton, 16410 Cornerstone Dr., Belton MO
Holiday Inn Express & Suites KC/Grandview, 12801 US Hwy 71,
Grandview, MO

For more information contact Cheryl Boyles: 816-674-3124 or crboyles@sbcglobal.net
or visit our website: www.kcbest.org